



# GMT MONTHLY MEMBERSHIP PROGRESS REPORT

Results as of: 1/31/2020

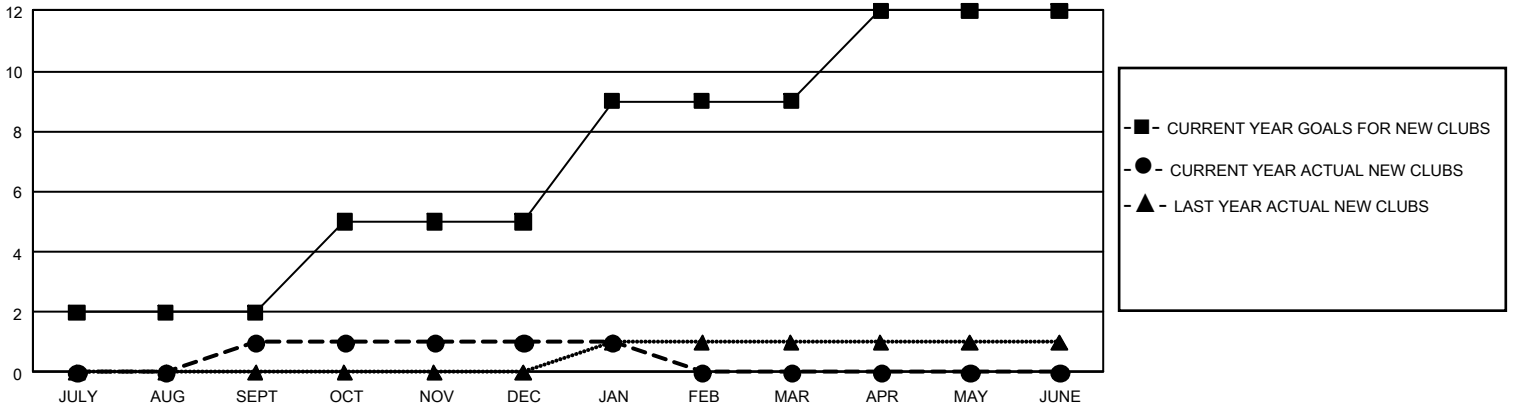
## GMT Constitutional Area 5 - J, Group G

GMT: OPEN

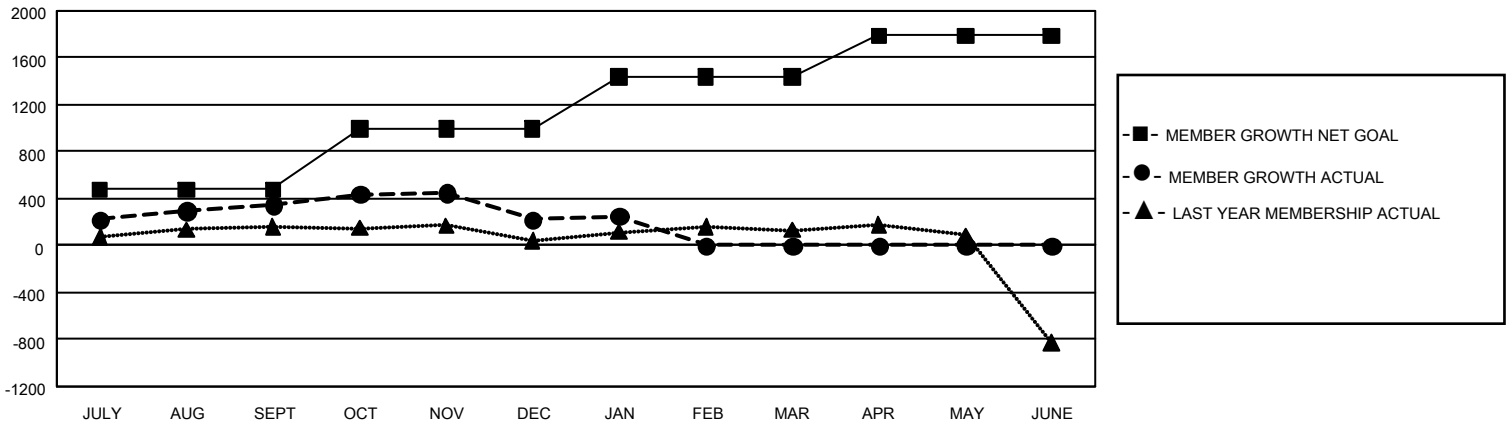
REPORT DOES NOT INCLUDE CLUBS IN UNDISTRICTED AREAS.

Clubs				Members			
RESULTS FOR 2019-2020				RESULTS FOR 2019-2020			
QUARTER	NEW CLUB GOAL	NEW CLUBS	DROPPED CLUBS	QUARTER	MEMBER GROWTH NET GOAL	MEMBER GROWTH ACTUAL	DROPPED MEMBERS ACTUAL (including transfers)
JULY/AUG/SEPT	6	1	3	JULY/AUG/SEPT	1,425	735	315
OCT/NOV/DEC	9	0	1	OCT/NOV/DEC	1,560	321	440
JAN/FEB/MAR	12	0	1	JAN/FEB/MAR	1,335	112	83
APR/MAY/JUNE	9	0	0	APR/MAY/JUNE	1,047	0	0

GOALS AND ACTUAL NEW CLUBS CUMULATIVE



GOALS AND ACTUAL MEMBERS CUMULATIVE



<b>DROPPED CLUBS: 5</b>	356 CLUBS OF 633 ADDED 1 OR MORE NEW MEMBERS	<u>GENDER DISTRIBUTION</u>	
<u>DROPPED MEMBERS</u>		MALE	15,265 (78.85%)
DECEASED	97	FEMALE	4,094 (21.15%)
CLUB CANCELLED	20	TOTAL FAMILY UNIT MEMBERS 6,013	
OTHER	721		
TOTAL	838		
<a href="#">CLICK HERE FOR CUMULATIVE MEMBERSHIP DATA</a>			